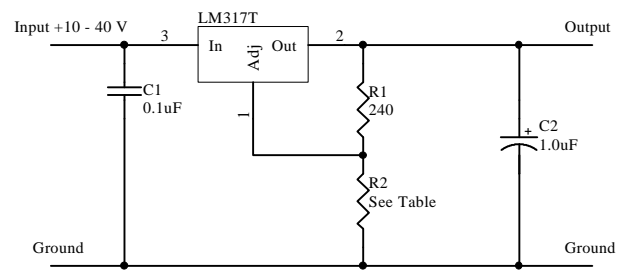


R2, ohms	Voltage
270	2.7
300	2.8
330	3.0
360	3.1
390	3.3
430	3.5
470	3.7
510	3.9
560	4.2
620	4.5
680	4.8
750	5.2
820	5.5
910	6.0
1000	6.5
1100	7.0
1200	7.5
1300	8.0
1500	9.0
1600	9.6
1800	10.6
2000	11.7
2200	12.7



Output Voltage Formula
 $V_{out} = 1.25(1 + R2/R1)$

Title		
Three Terminal Voltage Regulators		
Size	Number	Revision
A		
Date:	24-Dec-1999	Sheet of
File:	C:\CLIENT\WORK\VREG.SCH	Drawn By: Peter Bennett